



**JABBER FASHION LTD**

CRAFTSMANSHIP AT IT'S FINEST



**100% EXPORT ORIENTED KNIT COMPOSITE GARMENTS INDUSTRY**

**[WWW.SBSTYLEBD.COM](http://WWW.SBSTYLEBD.COM)**

# AT A GLANCE

OF JABBER FASHION LTD



**ESTABLISHED  
SINCE - 2007**



**# OF EMPLOYEES  
3500**



**TURNOVER  
USD 60 MILLIONS**

## GARMENTS



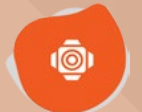
Floor Space 1,20,000 Sq.ft  
Production Capacity - 2 Million Pcs / Month  
Total Production Lines - 31  
Total Employees - 1800  
Total Machine - 850 Set

## KNITTING



Floor Space 20,000 Sq.ft  
Production Capacity - 12 Ton / Day  
Total Employees - 200  
Total Machine 25 set

## DYEING



Floor Space 3,00,000 Sq.ft  
Production Capacity - 30 Ton / Day  
Total Employees - 1000  
Total Machine - 50 Set

## SCREEN PRINTING



Floor Space 36,000 Sq.ft  
Production Capacity - 70,000 Pcs / Day  
Total Employees - 350  
Total Machine - 20 Set

## ALL OVER PRINT (AOP)



Floor Space 36,000 Sq.ft  
Production Capacity - 7 Ton / Day  
Total Employees - 120  
Total Machine 2 Set  
( 12 Color - 1 Set )  
( 08 Color - 1 Set )

## EMBROIDERY



Floor Space 3000 Sq.ft  
Production Capacity - 5000 Pcs / Day  
Total Employees - 20  
Total Machine Head - 56 Set

# MANAGEMENT



**MD. SHAJAHAN**

Chairman

[shajahan@sbknitcomposite.com](mailto:shajahan@sbknitcomposite.com)



**MD. AZAD HOSSAIN MANIK**

Managing Director

[azad@sbknitcomposite.com](mailto:azad@sbknitcomposite.com)



**MD. AZAHAR HOSSAIN**

Director

[azahar@sbknitcomposite.com](mailto:azahar@sbknitcomposite.com)



**MD. ALAMGIR HOSSAIN KHOKON**

Director

[khokon@sbknitcomposite.com](mailto:khokon@sbknitcomposite.com)

# MANAGEMENT



**SAYEED SHAYAN**

DIRECTOR

[sayeed@sbkntcomposite.com](mailto:sayeed@sbkntcomposite.com)



**ARMAN JAYAN**

DIRECTOR

[arman@sbkntcomposite.com](mailto:arman@sbkntcomposite.com)



**MD. TAREQUE MAHMUD  
RAIHAN**

DIRECTOR

# KEY PERSONS



**MUHAMMED ABDUL LATIF KHAN**  
HEAD OF MARKETING & MERCHANDISING  
alkhan@sbkntcomposite.com  
+88 01833-104482



**GOUTOM KUMAR MALLIK**  
G.M (HR, ADMIN & COMPLIANCE)  
hrm@sbkntcomposite.com  
+88 01833-104410



**MD. AKRAMUZZAMAN (MUNNA)**  
G.M (Operation)  
gm.munna@sbkntcomposite.com  
+88 01833-104485



**MUHAMMAD ABDUL JALIL**  
A.G.M  
(MARKETING & MERCHANDISING)  
jalil@sbkntcomposite.com  
+88 01833-104423



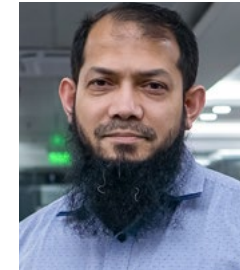
**ROKON UDDIN AHMED (REZA)**  
G.M (COMMERCIAL)  
reza@sbkntcomposite.com  
+88 01833-104422



**MD. SHAHJAHAN SHIRAJ**  
D.G.M  
(MARKETING & MERCHANDISING)  
shiraj@sbkntcomposite.com  
+88 01833-104425



**MUAMMAD REJUANUL KABIR (MASUM)**  
A.G.M  
(MARKETING & MERCHANDISING)  
masum@sbkntcomposite.com  
+88 01833-104424



**MOHAMMAD RAJAUl KARIM**  
G.M  
(TEXTILE)  
gm.dyeing@sbkntcomposite.com  
+88 01833-104429



**MD. ALAMGIR HOSSAIN**  
A.G.M (PRODUCTION)  
production@sbkntcomposite.com  
+88 01833-104467



**SAMSUZZAMAN MASUD**  
A.G.M (HR, Admin & Compliance)  
compliance@sbkntcomposite.com  
+88 01833-104406

# OUR PRODUCTS

( We manufacture all types of knit products,some popular customer choices are listed below )

T-SHIRT

POLO SHIRT

SWEAT SHIRT

HOODY

JACKET

LEGGING

PANT (JOGGER)

JOGGERS ROMPER

BABY DRESS

BOXER / BRIEF

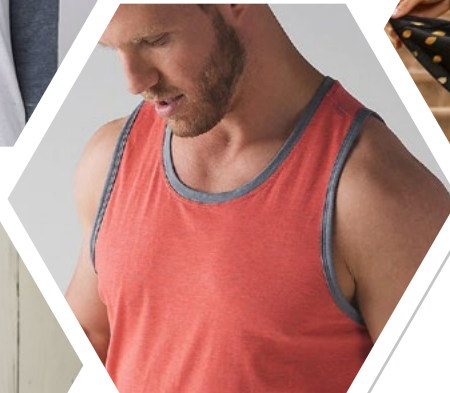
NIGHT DRESS

PAJAMA SETS

TANK TOP

TROUSER

SKIRTS



# OUR CUSTOMERS



PRIMARK®



MATALAN

OVS

TAKKO  
FASHION

PREMIUM BRANDS FOR ALL  
F&F STORES  
EST. 2015



RENNER



VU VANILLA  
UNDERGROUND



# OUR MEMBERSHIP & CERTIFICATIONS





# GARMENTS

<b>Floor Space</b>	<b>1,20,000 Sq.ft</b>
<b>Total # OF Floor</b>	<b>10</b>
<b># Of Employees</b>	<b>1800</b>
<b>Production Line</b>	<b>31</b>
<b>Production Capacity</b>	<b>2 Million Pcs/Month</b>
<b>Sewing Machine</b>	<b>700 Sets</b>
<b>Iron</b>	<b>75 Sets</b>
<b>Boiler</b>	<b>01 Set</b>
<b>Generator</b>	<b>01 Set</b>
<b>Metal Detector</b>	<b>03 Sets</b>
<b>Pull Test Machine</b>	<b>01 Set</b>
<b>Fusing Machine</b>	<b>01 Set</b>

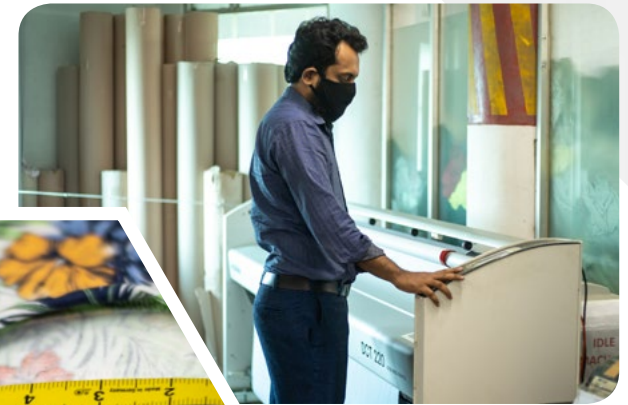


# CAD & SAMPLE

Floor Space 5000 Sq.ft

Total Machine 40 Sets

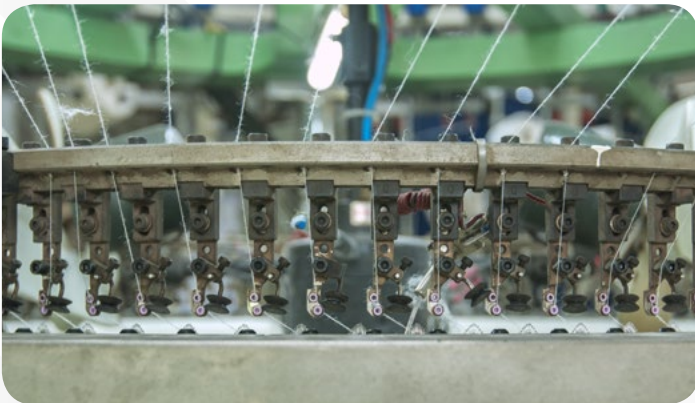
Production Capacity 250 Pcs / Day



# KNITTING

# Of Total Knitting Machine    25 Sets  
# Of Dia Coverage                24" to 44"  
Knitting Capacity Per Day       12 Ton

**Knitting Production(Types of Fabric) :**  
S/J, LYCRA S/J, TERRY, LYCRA TERRY  
RIB, PIQUE, LACOSTE, INTERLOCK, WAFFLE



# DYEING

Dyeing Machine	50 Sets
Dyeing Per Day	30 Ton
Finishing Per Day	45 Ton
Stenter Machine	04 Sets
Open width Compactor	03 Sets
Tension Free Dryer	01 Set
Tubelar Compactor	01 Set
Slitting & Squeezing	04 Sets
Brushing Machine	01 Set
Tumble Dryer	05 Sets
Fabric inspection	04 Sets
Sueding Machine	01 Set



# LABORATORY

## Physical Lab

Washing Machine	05 Sets
Dryer Machine	04 Sets
Rota Wash Machine	01 Set
Yarn Count Machine	01 Set
Twist Count Machine	01 Set
pH Meter Machine	01 Set
Rubbing Machine	01 Set
DI Water Machine	01 Set
Shaker Machine	01 Set
GSM Cutter Machine	01 Set
Balance Machine	01 Set

## Chemical Lab

Lab Dyeing Machine	05 Sets
Dryer Machine	02 Sets
Balance Machine	02 Sets
Data Color	01 Set



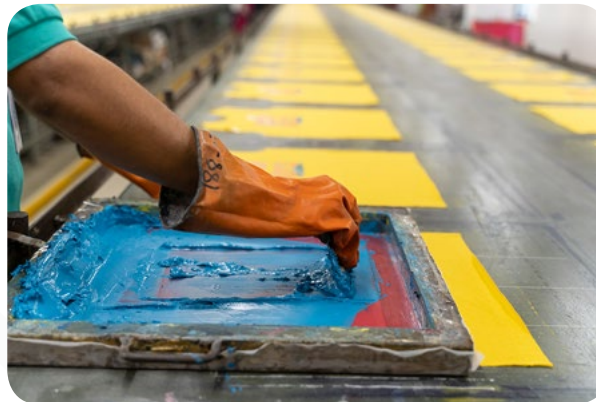
# ALL OVER PRINT (AOP)

<b>Floor Space</b>	<b>36,000 Sq.ft</b>
<b>Printing Machine</b>	<b>02 Sets</b>
( 12 Color 1 Set )	
( 08 Color 1 Set )	
<b>Brand name</b>	<b>KUIL</b>
<b>Digital Laserjet Engraving</b>	<b>01 Set</b>
<b>Digital Inkjet Engraving</b>	<b>01 Set</b>
<b>Developer Machine</b>	<b>01 Set</b>
<b>Hardner Suction Machine</b>	<b>01 Set</b>
<b>Rubber Grinder Machine</b>	<b>01 Set</b>
<b>Capacity Per Day</b>	<b>07 Tones/Day</b>



# SCREEN PRINT

Floor Space	36000 Sq.ft
Total Table	30 Pcs
Table Size (Length)	60 Feet
Heat-press Machine	08 Sets
Auto Label Print Machine	06 Sets
Auto Dryer Machine	03 Sets
Curing Machine	03 Sets
Production Capacity	70,000 Pcs / Day



# EMBROIDERY

**Floor Space**            3000 Sq.ft  
**Total Embroidery**    04 Sets  
**Capacity Per Day**    5000 Pcs  
**Machine Brand**        Haina (China)  
**Total Machine Head** 56





# QUALITY CONTROL

At **JABBER FASHION LTD.** all processes and procedures are constantly being monitored to ensure ethical, safe working place while maintaining highest possible quality of garments manufactured.

Our quality control team starts their quality control protocols from the very early stage of sourcing yarn. They work and monitor very closely from the quality of the delivered yarn, knitting process including quality check at every point.

Our quality team not only check and test our goods by hand but also uses several types of state high end testing equipment. The quality team is completely responsible for ensuring the best quality of our goods in any production stage such as knitting, dyeing, all over print(AOP), screen print, print curing, CAD markers for bulk cutting, fabric panels, each and every sewing lines including finished output and last but not least, they also check the finished packaging of the final goods those are ready to ship out to international customers.

All the responsible quality staffs are provided with full authority to stop production at any stage should there be any quality issue.

**CODE OF CONDUCT :** For the sake of our employee's safety and social commitment to all of our workers, we have employed 2 additional full-time staffs those who specializes in human right laws, local laws and ILO conventions for speculation and reporting anonymously to HR/Admin and compliance team for ensuring the best possible safety measures that we can offer at our working grounds. At all our premises, every worker and staff can directly communicate with top management for any type of support or getting help for any sort discomfort.

SB Style Composite Ltd believes that the staff and worker recruiting process should be true and fair without differentiating any sort of color, racism or discrimination. It has always been our practice to evaluate our job candidates on their academic achievements, practical skills and instinct.

As we are a compliance factory, we do not recruit any child labor or any applicant under the age of 16 years.

We have a full-time medical doctor at our premise serving free medical services to all our staffs and workers when in need. Every floor has two exits and all exits are kept open during the working hours. Adequate fire-fighting equipment and tools are placed through the entire floor. We also have a fire fighting team is trained for serving our premise 24 hours and 365 days in case of any emergency. On every floor first aid services are available. Ample numbers of pure drinking water dispensers are available for everyone in each floor. All our workers have the right to form their own welfare organization and they have the complete right to meet the top management personnel for requesting their demand.

**COMPLIANCE:** We fulfill all the compliance needs required by the customers.



# SISTER CONCERNS

**SAKURA DYEING & GARMENTS LTD.**

**S.B STYLE COMPOSITE LTD.**

**S.B KNIT COMPOSITE ( DYEING & PRINTING UNIT )**

**PATRIOT PACKAGING INDUSTRY**



**SAKURA DYEING & GARMENTS LTD.**  
( Garments Unit )



**S.B KNIT COMPOSITE**  
( Dyeing & Printing Unit )



**S.B STYLE COMPOSITE LTD.**  
( DYIENG & Garments Unit )  
&  
**PATRIOT PACKAGING INDUSTRY**  
( Accessories Unit )

# CONTACT US



**DELPARA (DHAKA-NARAYANGANJ  
LINK ROAD), FATULLAH,  
NARAYANGANJ - 1400,  
BANGLADESH.**



**shajahan@sbknitcomposite.com  
azahar@sbknitcomposite.com  
sayeed@sbknitcomposite.com  
arman@sbknitcomposite.com  
hrm@sbknitcomposite.com**



**+88-01833104404 - 10  
+88 - 01833104499.  
www.sbstylebd.com**

